

# TENSION CANOPY SYSTEM



# TENSION CANOPY SYSTEM



## What is a Tension Canopy System?

A Tension Canopy System is a flexible way of obtaining your outdoor living requirements.

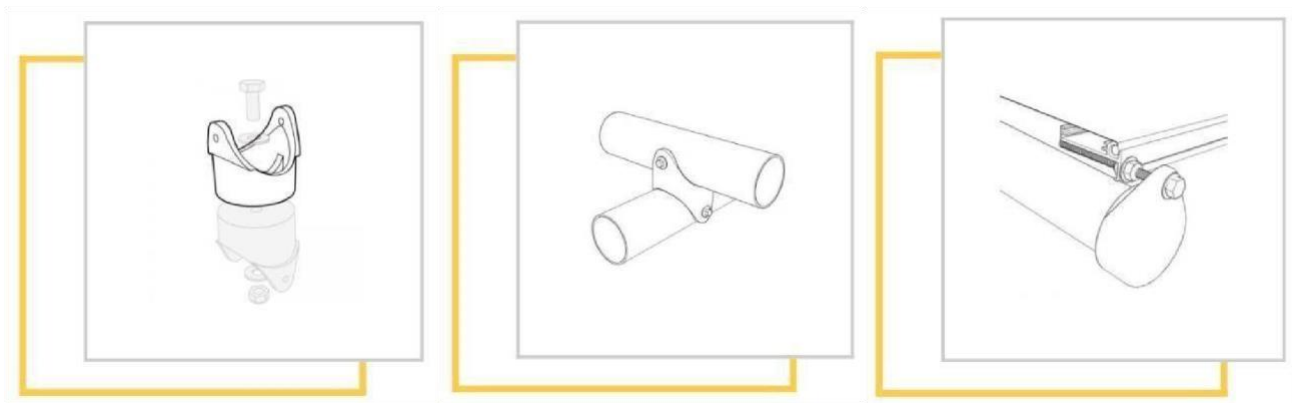
Perfect for use in a large range of applications our systems are designed and built here in New Zealand using only the highest quality materials proven to last in our outdoor environment.

Our designers, manufactures and installers draw from a lifetime of experience to create a system perfect for your outdoor area.

## Why a Tension Canopy System?

Our systems can be integrated into almost any existing area. Powder coated aluminum framework with stainless steel fastenings, structures are corrosion resistant and maintenance free making them ideal for close proximity to coastal environments.

A patented coupling and tension system allows components to be pre powder coated and easily constructed onsite. The system allows two crossing pipes to be joined together permanently without welding making for a versatile and extremely strong joining point.



# TENSION CANOPY SYSTEM



## What's the Canopy made out of?

The main point of difference our system offers over other systems on the market is our canopy membranes are manufactured using architectural PVC fabrics. These fabrics offer a variety of colour and translucencies all with the highest UV ratings and warranties on the market.

All Canopies membranes are 100% waterproof and tensioned drum tight to the system so there's no noise or movement.



# TENSION CANOPY SYSTEM



## Can my system be enclosed with drop screens

Your custom pergola can be designed to incorporate drop screens which can turn your new area into a year-round outdoor room.

We offer a range of screen systems which are simple to use and designed to last in New Zealand's harsh outdoor environment.

Screens can either be manufactured in clear pvc for optical clarity of mesh for sun protection and privacy. Mesh screens come in a variety of colour and styles to cater for your personal taste.



# TENSION CANOPY SYSTEM



## Design, manufacturing, and installation process

Following your onsite consultation and quotation with one of our sales team the next step in your Pergola process will be to receive a concept design from our Design team. Your concept design will show exactly how the system will look when fitted to your structure.

Once you are happy with your concept, we will begin its manufacturing phase right here in our local factory. Following this you've just got to sit back and watch our experienced, certified fitters install your new system.



PALMER CANVAS ©

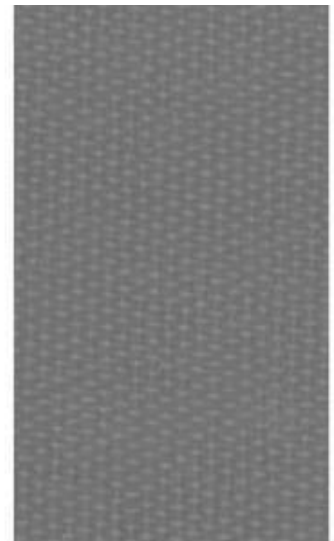
## HIRAOKA SUNDREAM CANOPY RANGE:



**SX 1800-H(A)  
CLEAR**



**SX 1800-C(A)  
COOL**



**SX 1800-H(A)  
CHARCOAL**

	SX 1800-H (A) CLEAR	SX 1800-C (A) COOL	SX 1800-H (A) CHARCOAL
<b>LIGHT TRANSMISSION</b>	62%	52%	32%
<b>UV-A Block</b>	99.6%	99.7%	99.6%
<b>UV-B Block</b>	99.9%	99.9%	99.9%

# TENSION CANOPY SYSTEM



**DURALLOY®**  
SOLID COLOUR RANGE



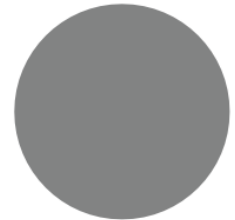
**CLOUD**  
TSR 72% LRV 76%



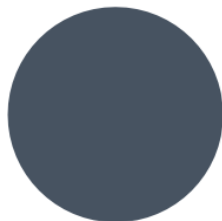
**TITANIA**  
TSR 67% LRV 69%



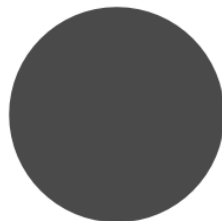
**GULL GREY**  
TSR 57% LRV 50%



**SANDSTONE GREY**  
TSR 42% LRV 27%



**NEW DENIM BLUE**  
TSR 25% LRV 11%



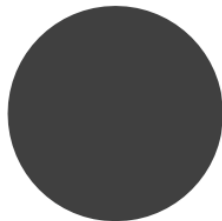
**GREY FRIARS**  
TSR 28% LRV 10%



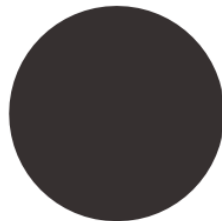
**WINDSOR GREY (LG)**  
TSR 23% LRV 7%



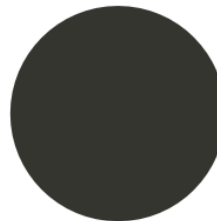
**FLAXPOD\***  
TSR 25% LRV 7%



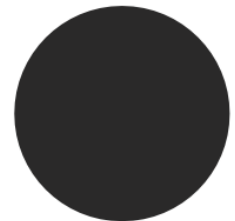
**THUNDER GREY**  
TSR 30% LRV 12%



**SLATE**  
TSR 27% LRV 9%



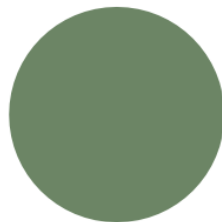
**IRONSAND**  
TSR 28% LRV 8%



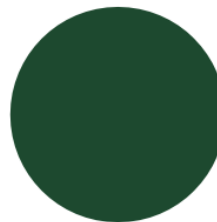
**EBONY**  
TSR 5% LRV 5%



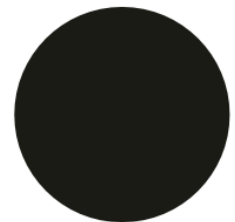
**LICHEN**  
TSR 44% LRV 28%



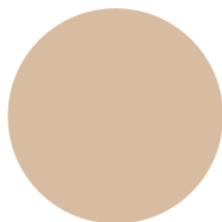
**MIST GREEN**  
TSR 40% LRV 25%



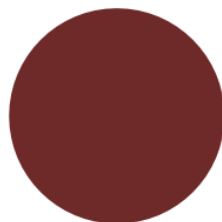
**PERMANENT GREEN**  
TSR 26% LRV 10%



**KARAKA**  
TSR 25% LRV 8%



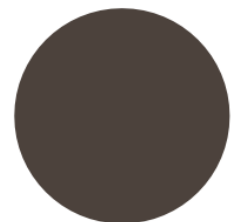
**DESERT SAND**  
TSR 58% LRV 51%



**SCORIA**  
TSR 32% LRV 12%



**PIONEER RED**  
TSR 36% LRV 15%



**LIGNITE**  
TSR 30% LRV 11%