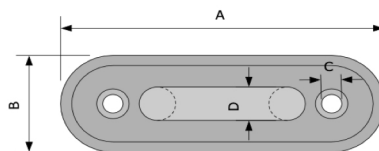


SHADE SAIL HARDWARE 2023

> EYE PLATE – LONG

Stainless Steel
Polished finish
AISI 316
Requires 4x screws
Available individually

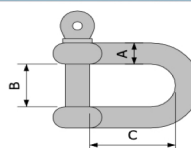


CODE	SIZE (A)	SIZE (B)	SIZE (C)	SIZE (D)	RRP PRICE
K3212-6	65mm	19mm	5mm	6mm	\$3.50
K3212-8	80mm	25mm	6mm	8mm	\$6.60
K3212-10	100mm	32mm	7mm	10mm	\$9.00

CONNECTORS

> STANDARD D-SHACKLE

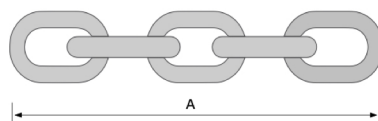
Forged Stainless Steel
Polished finish
AISI 316
User friendly removable pin
Available individually



CODE	SIZE (A)	SIZE (B)	SIZE (C)	RRP PRICE
K360-6	6mm	12mm	21mm	\$4.50
K360-7	7mm	14mm	25mm	\$5.20
K360-8	8mm	17mm	28mm	\$5.40
K360-10	10mm	21mm	35mm	\$9.30
K360-12	12mm	27mm	45mm	\$16.80

> CHAIN ADJUSTER

Standard Shackle + Regular Chain
Stainless Steel Shackle & Chain
Polished finish
AISI 316
Available individually

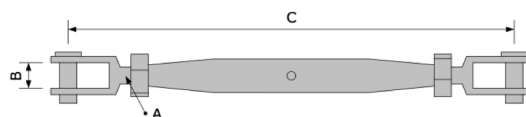


CODE	CHAIN SIZE	SIZE (A)	LINKS	RRP PRICE
C6.130	6mm	130mm	5x	\$14.10
C8.160	8mm	160mm	5x	\$24.65
C6.220	6mm	220mm	9x	\$25.38
C8.280	8mm	280mm	9x	\$44.37

TENSIONERS

> PIPE TURNBUCKLE

Stainless Steel
Polished finish
AISI 316
Pipe body adjuster
Available individually



CODE	SIZE (A)	SIZE (B)	SIZE (C) Closed	SIZE (C) Extended	RRP PRICE
K312P-5	5mm	6mm	130mm	190mm	\$11.70
K312P-6	6mm	8mm	140mm	200mm	\$15.20
K312P-8	8mm	11mm	165mm	250mm	\$21.80
K312P-10	10mm	12mm	200mm	290mm	\$36.10
K312P-12	12mm	15mm	250mm	370mm	\$60.60



palmer canvas