



Retractable

Awnings



“Enhancing outdoor living”

“Timeless Design”

About

Enhance your home or business with our bespoke smart retractable awnings. Effortlessly extend perfect shade or shelter with the touch of a button, instantly creating seamless indoor-outdoor flow. Tailored to your unique style, it's more than an addition; it's a smart, lasting investment for comfort, luxury, and the freedom to live beautifully outdoors.

Featuring our 4 variations

1. Basic | pg 6 - 9
2. Kompakt | pg 10 - 13
3. Titan | pg 14 - 17
4. Millennium | pg 18 - 21

A year-round architectural shade solution designed to reimagine all outdoor environments — transforming open spaces like this café into welcoming, premium destinations defined by timeless design.

“It’s elevated the entire aesthetic of our outdoor area. It’s seamless, functional, and admired by everyone who visits.”



An architectural shade system designed to elevate outdoor living. Offering refined comfort for both relaxation and sophisticated entertaining

About & Features

Open Up Your Lifestyle

Dine under the stars, relax in the shade, or invite the morning sun in. Your outdoor space becomes a true extension of your home.

Create New Spaces

Instantly create functional outdoor spaces that offer comfort and versatility. Perfect for relaxing, entertaining, dining, or providing sheltered seating for guests or customers.

Designed For All Seasons

Shelter from rain, UV, and wind while enjoying natural airflow and comfort year-round.

Effortless Comfort

Remote-controlled feature lets you instantly adapt to any moment with precision and ease.

Architectural Elegance

Choose from four awning options – Family Basic, Family Kompakt, Titan Flex and Millennium – each crafted to suit different preferences while delivering elegance and premium style.

Proven International Product, Built to last

Crafted from durable, low-maintenance aluminium and stainless steel. Oztech awnings are engineered to withstand harsh conditions and deliver long-lasting performance. Wind resistance certified and warranty backed.

Custom Colors and Materials

With a wide range of performance fabrics in unique textures, patterns and colors, plus a huge range of premium powder-coated metal finishes, Oztech awnings offer versatile solutions for any outdoor space.

Oztech Family Basic

Our Entry Level Basic Option - For Your Everyday

With sleek European styling and effortless remote control, this awning creates striking shade and transforms outdoor spaces into functional, resort-inspired retreats. Built for everyday living, it offers lasting style, seamless integration, and a bold architectural presence. The Family Basic is also available without the hood known as the "Family Complete". For more information on this option please contact us.

Semi-Cassette Protection

Encloses the fabric and mechanism on three sides for extended durability.

Space-Saving

Compact cassette design (just 200mm high and deep) blends seamlessly with your home's exterior.

Quality Materials & Operation

Built to perform with smooth, reliable movement and lasting durability.

User Friendly Remote Control

Seamless motorised operation at the touch of a button, or opt for a manual crank. Both designed for effortless, reliable control.

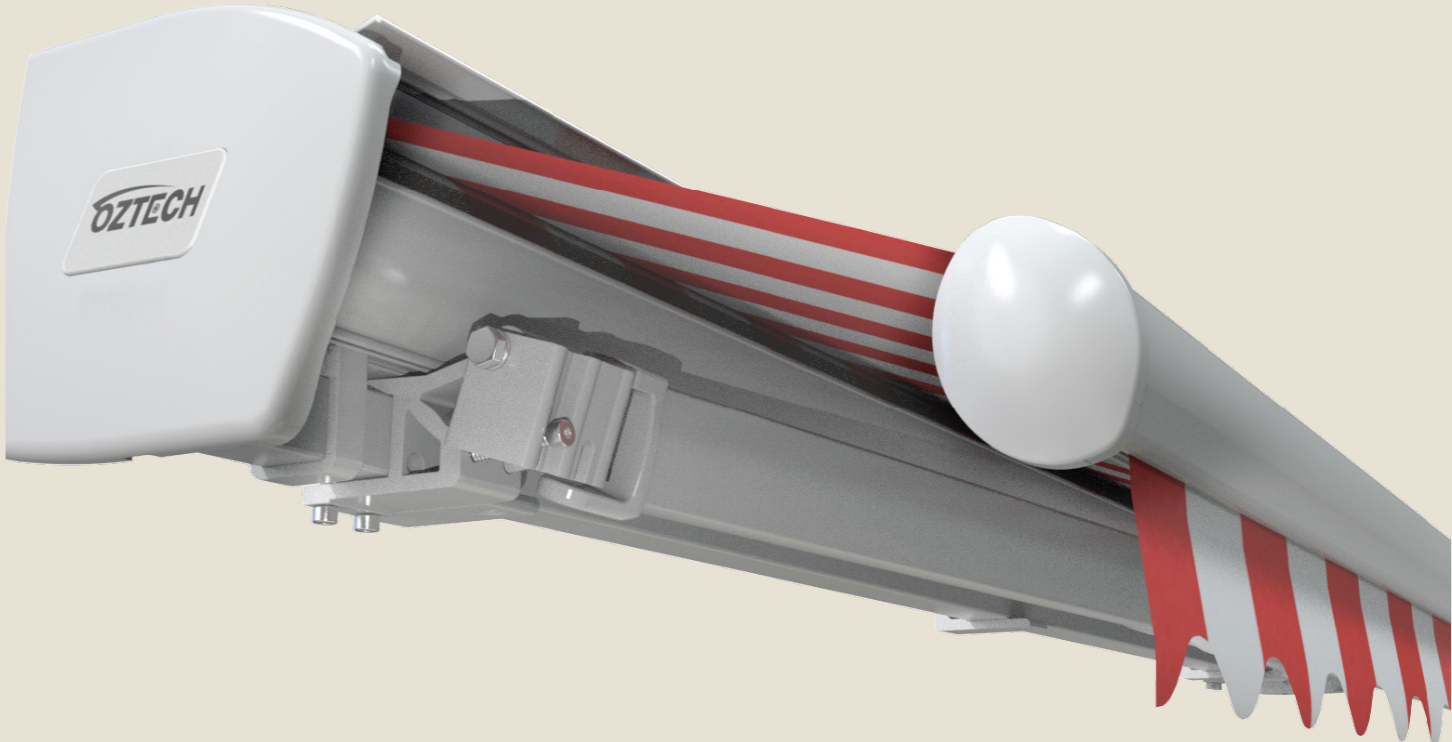
LED Lighting & Smart Sensors

Optional integrated LED lighting, sun and wind sensors, and motion-activated controls enable automated, climate-responsive functionality for enhanced outdoor performance.

Visually Customisable

Explore a wide range of premium powder coat finishes, fabric styles, and branding options to suit any setting. Custom sizing ensures a perfect fit, made just for you.

"It's stylish, effortless and perfect for family time, we use it every single day"





Oztech Family Kompakt

Our Standout Durable and Compact Design Option - For a Premium Feel

A fully enclosed, ultra-slim cassette crafted for clean architectural lines and complete fabric protection. Kompakt mounts flush to the wall, features remote control, and delivers a premium aesthetic whether retracted or extended. Simple in form but powerful in all-weather performance, Kompakt brings quiet elegance and comfort to premium outdoor living.

Slim Full Cassette Design

Fully enclosed design protects fabric and mechanism from the elements while maintaining a clean, minimalist look.

Close-to-Wall Mounting

A tight-fit design that blends seamlessly with your architecture while keeping the look clean and sophisticated

High Quality Materials & Smooth Operation

Built with rust-free materials, high-tension arms, and an elite retracting system for long lasting performance.

User Friendly Remote Control

Seamless motorised operation at the touch of a button, or opt for a manual crank. Both designed for effortless, reliable control.

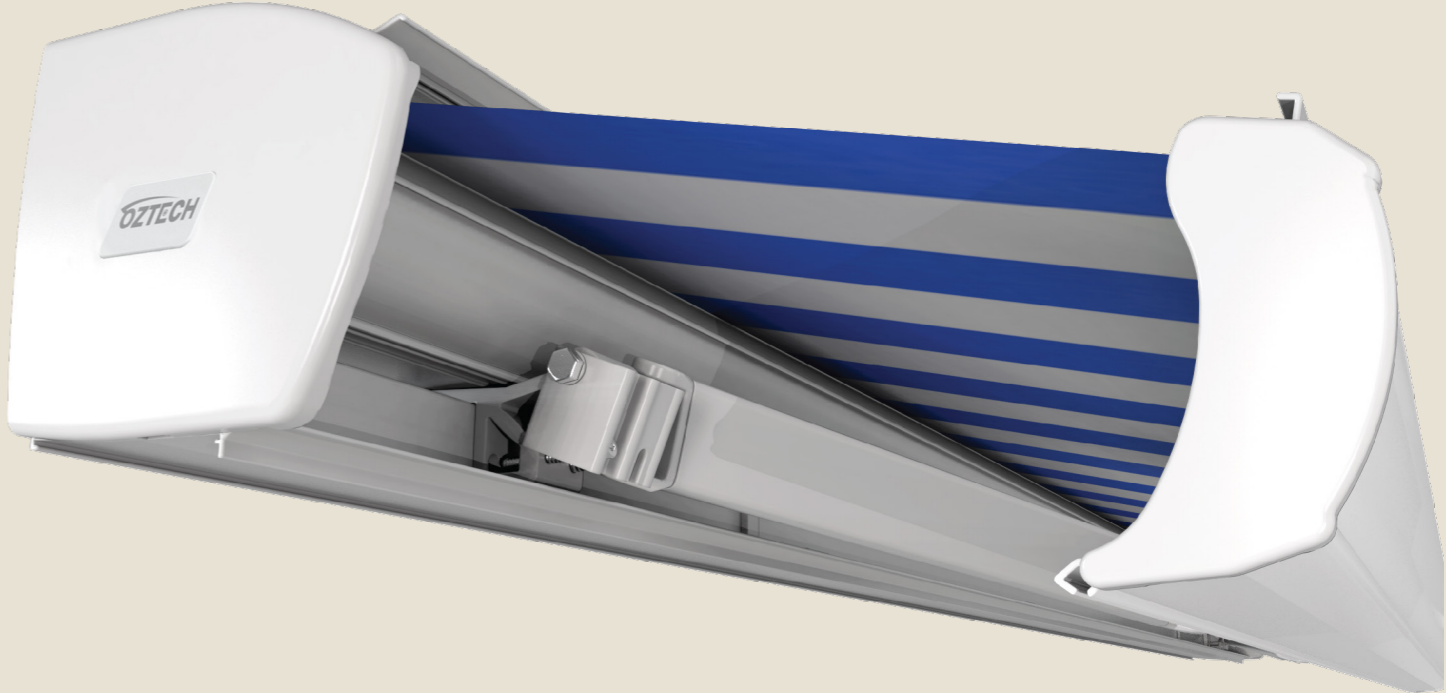
LED Lighting & Smart Sensors

Optional integrated LED lighting, sun and wind sensors, and motion-activated controls enable automated, climate-responsive functionality for enhanced outdoor performance..

Visually Customisable

Explore a wide range of premium powder coat finishes, fabric styles, and branding options to suit any setting. Custom sizing ensures a perfect fit, made just for you

“It fits so seamlessly into our outdoor space, we use it more than we ever expected, and the closed cassette looks incredible”





Oztech Titan Flex

Our Premium Pitch Adjustable Shade - For Total Custom Control & Comfort

Take full control with smooth, tool-free awning pitch adjustment from 5° to 52°, perfectly adapting to any environment for custom shading. Ideal for those who prefer precise sunlight control, all-weather performance, and tailored comfort. Titan delivers a unique, customizable shade solution for premium outdoor living.

User-Adjustable Pitch

Effortlessly control the awning angle from 5° to 52° with a built-in crank – no tools required.

Semi-Cassette Protection

Encloses the fabric and mechanism on three sides for extended durability and reduced maintenance.

Versatile & Space-Saving

Designed for flexible outdoor living. Sleek when retracted, adaptable when in use.

High Quality Materials & Smooth Operation

Built with rust-free materials, high-tension arms, and an elite retracting system for long lasting performance.

User Friendly Remote Control

Seamless motorised operation at the touch of a button, or opt for a manual crank. Both designed for effortless, reliable control.

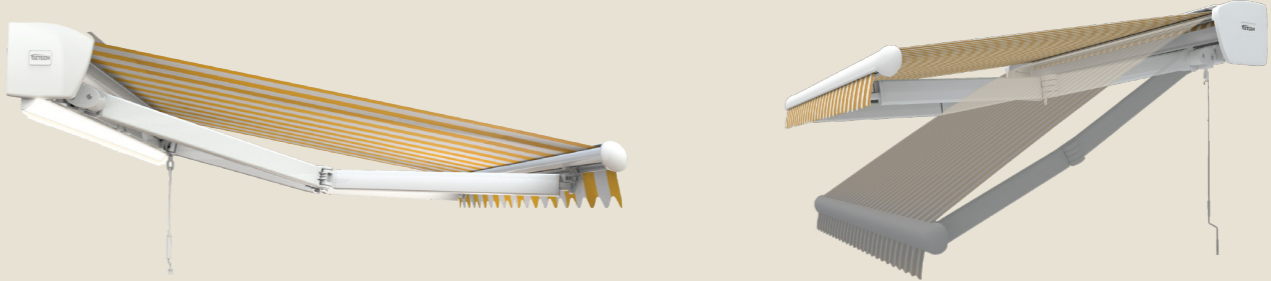
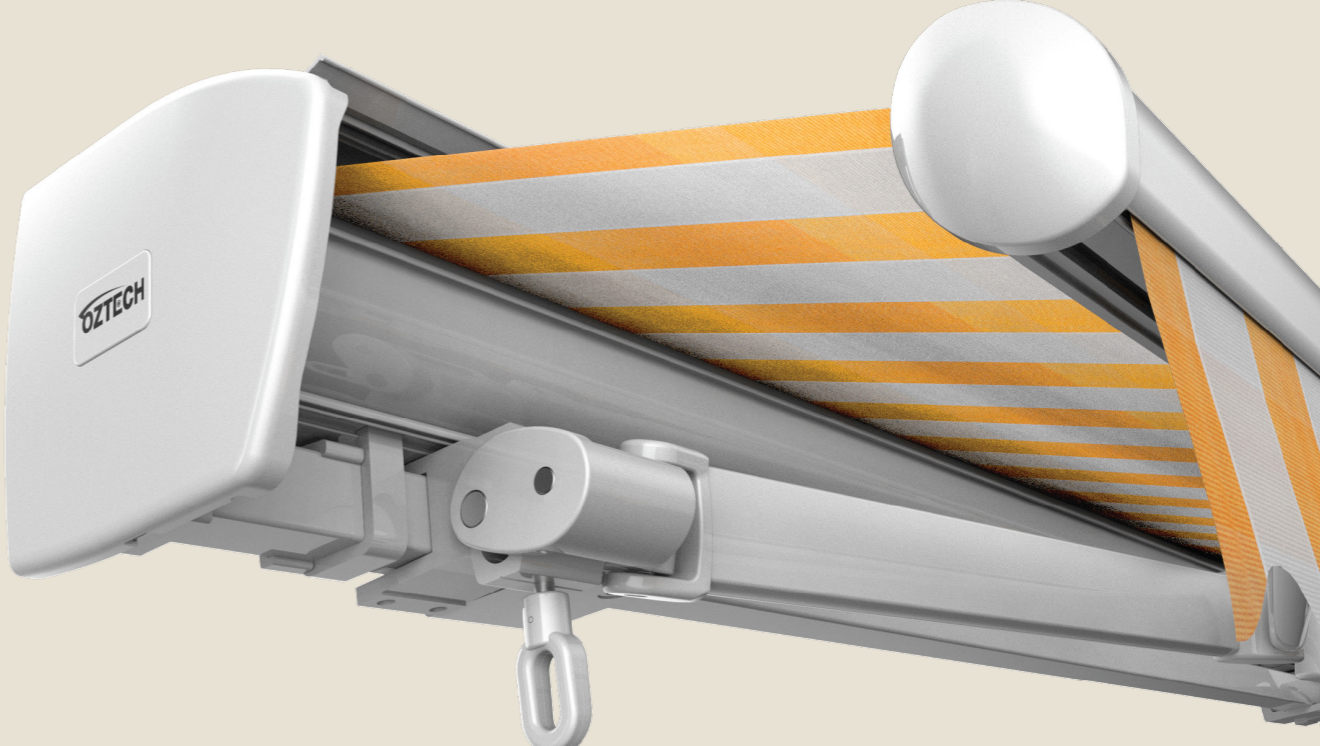
LED Lighting & Smart Sensors

Optional integrated LED lighting, sun and wind sensors, and motion-activated controls enable automated, climate-responsive functionality for enhanced outdoor performance.

Visually Customisable

Explore a wide range of premium powder coat finishes, fabric styles, and branding options to suit any setting. Custom sizing ensures a perfect fit, made just for you

“The angle control is so smooth and simple, no tools, no fuss. Just perfect shade, every time”





Oztech Millennium

“From design to function, it’s flawless. So beautiful, durable, and so effortless to use. Easily our favourite purchase in years”

Our Premium Shade Solution - For Function & Elegance

The Millennium Folding Arm Awning is a fully enclosed, self-supporting cassette system engineered to provide maximum shade with a premium feel. Its sleek, flush profile offers seamless coverage and extra protection in any environment. Designed for durability and elegance, Millennium combines modern form with refined functionality, using premium construction for lasting performance and style.

Flush-Fitting Full Cassette

Fully enclosed design protects fabric and mechanism from the elements while maintaining a clean, minimalist look. Also comes with a back cover for added protection.

Self-Supporting System & Fixing

Self-supporting and sleek, Millennium is ideal for fixing to large outdoor spaces with luxurious style

Slimline Profile

At just 160mm high when closed, it blends effortlessly with architectural facades.

High Quality Materials & Smooth Operation

Built with rust-free materials, high-tension arms, and an elite retracting system for long lasting performance.

User Friendly Remote Control

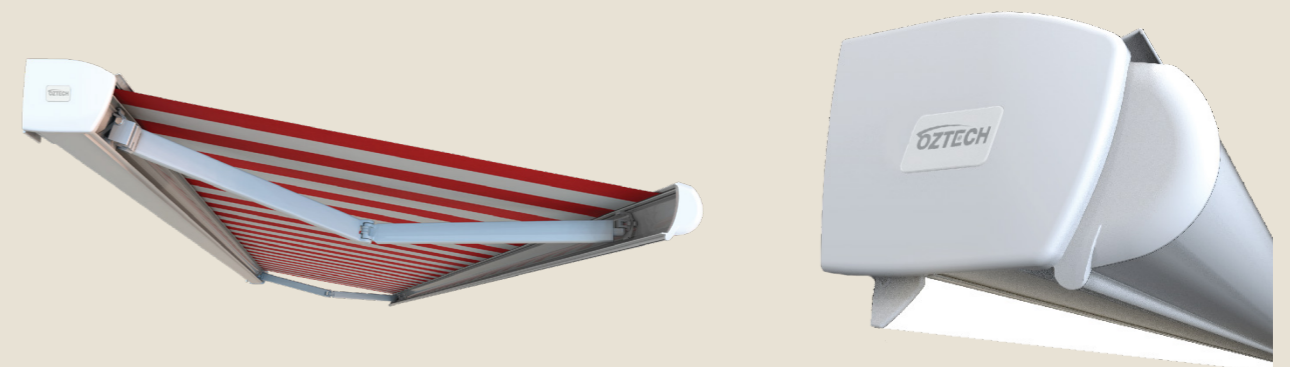
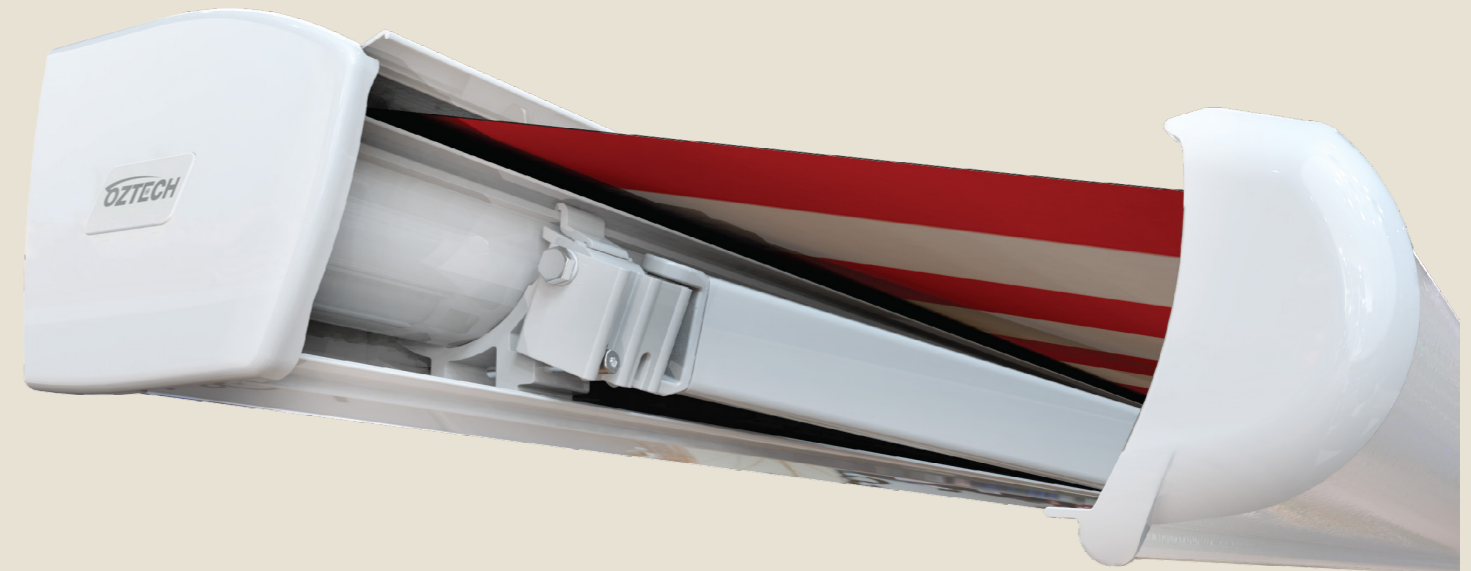
Seamless motorised operation at the touch of a button, or opt for a manual crank. Both designed for effortless, reliable control.

LED Lighting & Smart Sensors

Optional integrated LED lighting, sun and wind sensors, and motion-activated controls enable automated, climate-responsive functionality for enhanced outdoor performance.

Visually Customisable

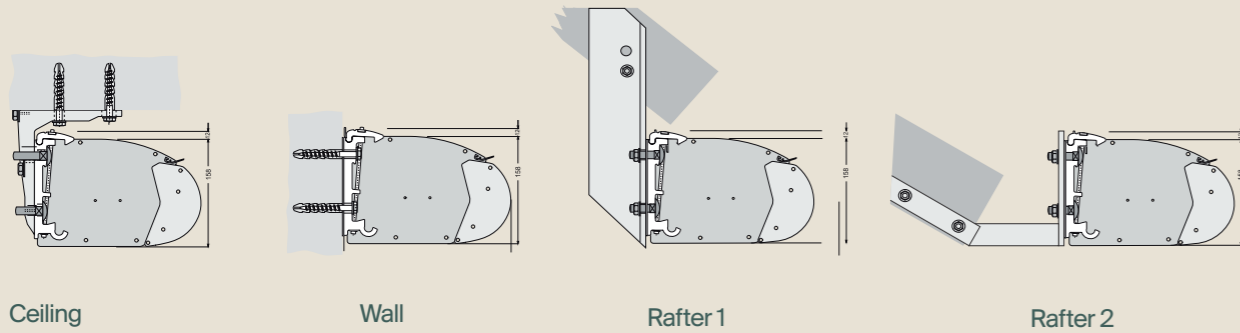
Explore a wide range of premium powder coat finishes, fabric styles, and branding options to suit any setting. Custom sizing ensures a perfect fit, made just for you.





Technical Features

Fixing Options



LED Options

LED Arms or LED Frame



Rapid Installation

Awning comes pre-assembled for a quick, hassle-free installation. Just mount to the wall and it's ready to use.

Quality Componentry

Awnings feature rust-proof components, high UV protection, wind resistance, and water repellency.

Arm Brackets: Arm bracket of high-strength aluminium alloy with support and high-impact screw, upper arm fork of forged aluminium.

Spring Tension Arm: In the central hinged arm joints, a plastic sheath prevents soiling and corrosion of the double cable and extends product durability.

Fabric Shell Cover: The fabric cover shell offers an elegant solution for concealing the fabric roller.

Color & Fabrics

At Oztech, all awnings come standard with high quality Dulux Duralloy powder coating, a durable, long-lasting finish from Dulux's Australian specific colour range.

Extensive Coloring Range

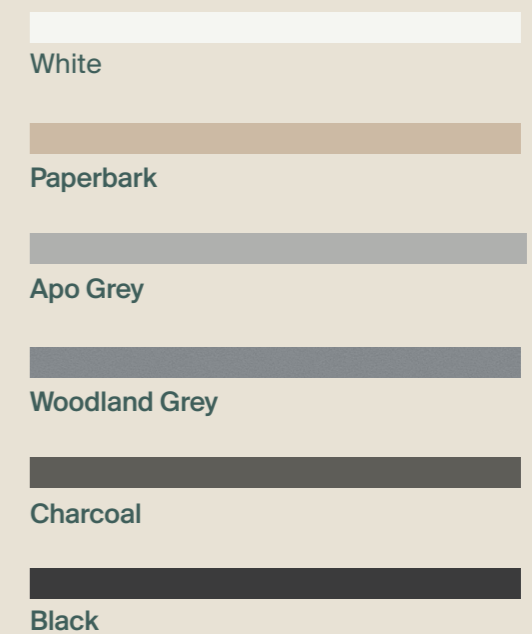
Dulux Duratec and other custom Dulux powder coat finishes are available for request in over 400+ styles. These premium options offer enhanced durability and style, with additional lead times and cost. At Oztech these come under 2 main variations "Premium", "Standard" with custom available on request.

Get in touch to explore our extensive fabric collection, sourced from the world's leading textile suppliers. Choose from a wide selection of patterns, textures, colours, and high-performance options to perfectly suit your space. Each premium fabric is crafted to elevate your awning with lasting style, durability, and function.

Premium Powder Coating Options Dulux Duratec



Standard Powder Coating Options Dulux Duralloy



Our Process

“We offer more than just a product, we deliver a proven process that makes creating your ideal outdoor space effortless, enjoyable, and expertly supported”

1. Let's Chat

Tell us about your space. Whether you're a retailer, homeowner or a trade customer, we'll listen, explore ideas, and guide you toward the perfect shading solution.

2. Design Consultation & Quote

Work with our expert team to refine your vision. We'll provide tailored advice, 3D design visuals, and product recommendations that suit your space, lifestyle and budget. Once the design direction is complete, an accurate quote will be produced.

3. Installation

Relax while our trained specialists handle the full installation, efficient, precise, and built to last. Every detail is taken care of.

4. Ongoing Support

Our job doesn't end at install. With trusted local teams and reliable warranties, we're always here to support you long after the system is in place.

Comparison Table

Awning Type	Family Basic (PG 6)	Kompakt (PG 10)	Titan Flex (PG 14)	Millennium (PG 18)
Cassette Type	Semi-Cassette OR No-Cassette	Full Cassette (Exposed back)	Semi-Cassette	Full Cassette (Complete unit)
Profile Fit	Standard wall fit	Slim, close-to-wall fit	Standard fit with pitch adjustment	Flush wall-mounted - Premium Fixed
Max Width (Single Unit) (mm)	9,000	9,000	9,000	7,500
Projection Size Options (mm)	1,600 2,100 2,600 3,100 3,600 4,100	1,600 2,100 2,600 3,100 3,600 4,100	1,600 2,100 2,600 3,100 3,600	1,600 2,100 2,600 3,100 3,600 4,100
Pitch Adjustment	Fixed	Fixed	Manually-adjustable (5°-52°)	Fixed
Recessed Fit (Available without End or side caps)	Yes	Yes	No	No
Operation	Motorised or manual	Motorised or manual	Motorised or manual	Motorised or manual
Remote Control LED, Wind & Rain Sensor, Motion Sensor, Remote Control	Available	Available	Available (highlighted feature)	Available
Visual Impact	Minimal / Basic	Ultra-compact (200mm height / 200mm depth)	Compact	Sleek & architectural (160mm height / 249mm depth)
Best For	Everyday use, stylish outdoor comfort	Compact spaces, modern homes	Customisable shade, sun-tracking	Open areas, weather resilience, luxury
Custom Colours & Branding	Yes	Yes	Yes	Yes
With Integral Rain Guttering	Yes	Yes	Yes	Yes
LED Max Size - on Folding Arm (mm)	4,000	3,000	4,000	3,000
LED Max Size - on Frame (mm)	9,000	9,000	9,000	7,500
Price Range	\$	\$\$	\$\$	\$\$\$

Note: Product details are subject to change without notice

Your outdoor escape
is closer than you think...

Expand your home
and transform the
way you live, creating
memories that will
last for life...

Contact Us

Set up a consultation with one of our local installers to explore design ideas, colour options, and custom solutions for creating your ideal Oztech awning space.



Have any questions?
Contact us using the details below.

Oztech New Zealand
0800 656 000
info@oztech.co.nz
oztech.co.nz



